



P.O. Box 1424, 6684 Leon Rd., Andover, Oh. 44003  
Clubhouse Phone: 440-293-8434 · Fax: 440-293-8447

Website: <http://www.lakevillagecampground.com> Renee Dambach-Jones, Website Admin.

Email: [lvooffice@lakevillagecampground.com](mailto:lvooffice@lakevillagecampground.com)

Sales: Contact Barry Kern or Call Clubhouse.

Newsletter Editor: Jane Spellacy [gnjjetson@yahoo.com](mailto:gnjjetson@yahoo.com)

**JANUARY ACTIVITIES**

**VOLUNTEERS NEEDED FOR THE ERIE RV SHOW**

**Dates:  
Feb. 9th-12th**

**Please see Kayla in the office for times if you would like to volunteer at the RV show.**

**Most dates & times available**

Locations: **CH**—Clubhouse, **PAV**—Pavilion, **PC**—Party Center, **P**—Pool, **GSF**—General Store Field, **RC**—Recreation Court

**FALL/WINTER CLUBHOUSE and OFFICE HOURS**

Clubhouse: Sun.—Th. 9 am—4 pm  
Fri. & Sat. 9 am—6 pm

Office hours: Sun, M, Th 9a—4p  
Tues., Wed.—closed  
Fri. & Sat. 9a—6p

**FALL POOL HOURS**

Sat. 10a—9p  
Sun. 10a—4p

Member's guests & general public welcomed for a fee:  
\$5.00/person per day or \$25/person per month  
\$15.00/family of 4 per day or \$50/family per month.



**FOR YOUR CONVENIENCE...**

Health or Fire Emergency call 911  
Andover Village Police 440-293-4555  
Ambulance 440-293-7991  
Ashtabula County Sheriff 440-576-0055  
St. Joseph Medical Center 440-293-6112  
Poison Control Center 1.800-222-1222

**Camp Representative**

George Emerson is not in camp during the off-season. For camp related emergencies call the office phone which is answered 24 hrs.

**Winter Access**

Members needing access to their trailer when the snow is deep may request their drive be plowed.

\$10.00 fee to plow (each time)

Call the office **at least 24 hrs. in advance** of your arrival.

**SALES OFFICE**

Call the Clubhouse and ask for Barry Kern. Check the LV website for sales info., lots for sale by LV and by owner.

**BINGO**

**DONE FOR THIS YEAR**

Thanks for playing!  
See you in the spring.

**CHAPEL**

Worship Service

**CLOSED FOR THE SEASON.**

## FROM THE DIRECTORS...

Jeff Ambrose (Security):

Renee Dambach-Jones (Member Services)

Rose Gordyan (Secretary):

Barry (Butch) Kern (Sales):

Jerry Rush (President):

Mary Simpson (Finance):

Duane Squibbs (Maintenance):

We anticipate having your 2012 Dues statements in the mail by the end of January. Thank you to all who have already paid.



**The new 2012 Campground Rules are posted in the Clubhouse. Please be sure to read these, as some rules have been changed!!!!**



**GO BROWNS!**

**GO STEELERS!**

## ATTENTION MEMBERS!

**If you or a guest of yours requires help in the bathroom from a spouse or family member due to medical ailments, the office now has signs to post outside the bathroom door.**

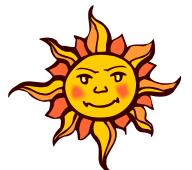
**Please see the office for more information**

## Welcome...New Members!

Andrew Messich Lot 229

Cleaster Longmire Jr. Lot 368

Information for the Sunshine Column is gathered by our office staff. If you know of a member that should be mentioned here please contact Kayla in the office with the info.



Remember in your prayers: Melissa Panning during her treatments, as well as the Thomas family, Roger Martin & the Gilmores over the passing of a family member

## COMING IN FEBRUARY

- Erie RV Show Feb 9th—12th.  
VOLUNTEERS NEEDED!!!